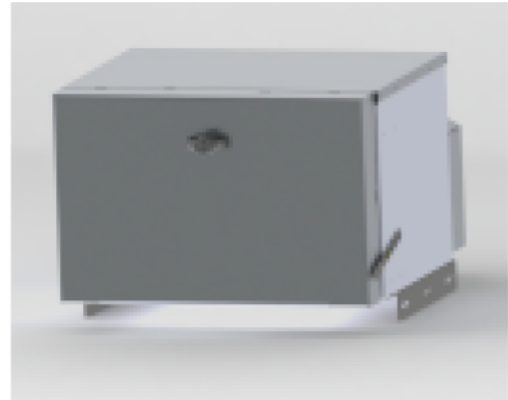




19511B Mobile Medical Cabinet Automatic Heating and Cooling

www.thomasems.com
800-445-3640



	Inside Dimensions	Outside Dimensions
Height	5.50"	10.56"
Width	11.50"	16.42"
Depth	8.70"	17.51"

VDC	11-15 VDC	22-26 VDC
Amps	.5 to 7.5(12)	.5 to 3.7(24)
Airflow Requirements: 65CFM		

Product Overview

- Unit is installable in a variety of configurations
- Functional in mobile, temporary or stationary environments
- Reliable, Robust and Low Maintenance Solid-State technology
- Snap locks for fast and consistent access to contents
- Padlock, Key, Keypad or other methods of locking for security of narcotics
- High tech insulation and thermoelectric proportional controlled methodology
- Manufactured in U.S.A.

Electrical

Unit operates at 12 or 24 VDC, AC power conversion optional. Peak power Consumption is dependent upon model and operating environment but typical power consumption at normal ambient temperatures (100F to 30F) is 50-80% of peak. Unit can be equipped with optional low voltage shutdown. (when voltage is restored the unit automatically restarts)

Temperature Control

Heating and cooling is accomplished using high efficiency thermoelectric technology. The temperature control boards use a proportional control program to maintain minimal temperature variation inside the unit. Internal temperature is preset but custom temperature settings are available. Insulation is state of the art vacuum and / Or PU panels that provide a barrier of maximum efficiency from external temperatures.

Design

Products contain no CFC's nor harmful contaminants requiring only standard tools for installation. Unit is field serviceable with the field service guide. Unit can be configured to operate on 120/220 VAC with optional DC power conversion. OTE engines are designed and manufactured to work day in and day out in the toughest conditions.

** Specification for reference only and are subject to change without notice.*